

GEEK Round



GK75-R01QS

GK75-R01QT

min. 1.5mm

max. 24mm

With Trim

Trimless

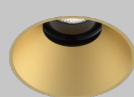
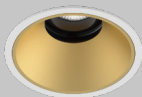
White



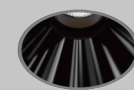
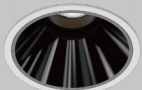
Black



Golden



Black Mirror



GK75-R01QS

25° / 360°



81mm  
3.19"

GK75-R01QT

25° / 360°



74mm  
2.91"

### Basic Information

Model	GK75-R01QS/R01QT
Embedded Parts	With Trim/Trimless
Mounting	Recessed
Trim Finishing Color	White/Black
Reflector Color	White/Black/Golden/ Black Mirror
Material	Cold Forged Pure Alu. (Heat Sink)/Die-casting Alu.
Cutout Size	∅ 75mm
Light Direction	25° 360°
IP Rating	IP20
Power	Max. 15W
Input Voltage	DC36V
Input Current	Max. 350mA

### Optical Parameters

Light Source	LED COB
Lumens	65lm/W 90lm/W
CRI	97Ra / 90Ra
CCT	3000K 3500K 4000K
CCT Changeable	2700K 6000K 1800K 3000K
Beam Angle	15° 25° 35° 50°
Shielding Angle	50°
UGR	< 13
LED Lifespan	50000hrs

Driver Voltage	AC100-120V AC220-240V
Driver Options	ON/OFF DIM TRIAC/ PHASE-CUT DIM 0/1-10V DIM DALI